

Inbuilding CMMG-7-60-NJ

Wideband MiMo Ceiling Antenna

22/06/2014 V5



- Discreet ceiling mount design
- 2x ultra-wideband elements
- Concealed screw fixings
- Low PIM and SAR tested to EN50385:2002

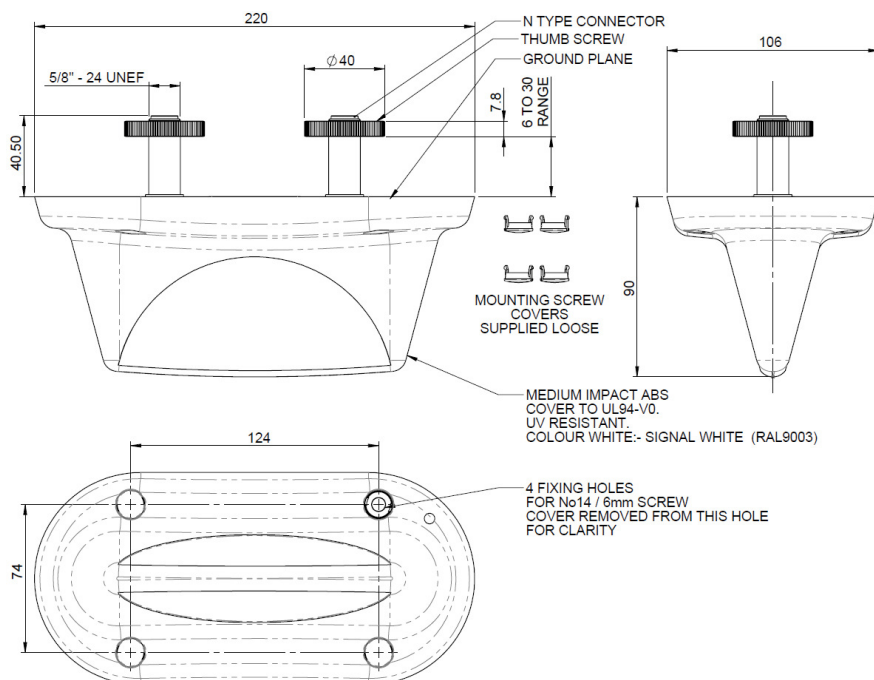
The CMMG-7-60-NJ ceiling antenna offers low PIM 2x2 MiMo coverage across 2G/3G & 4G frequencies (698-6000MHz) for inbuilding and DAS installations.

The antenna only requires two mounting holes for installation via the fitted low PIM N connectors but offers additional screw fixing holes disguised beneath press-fit caps. The antenna is ground plane independent and can be fitted onto both thick and thin ceiling tiles.

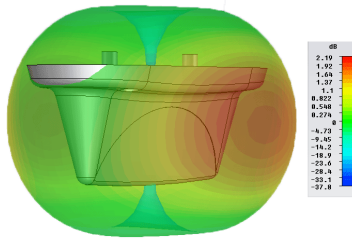


This product features Panorama Antennas' PIM Guard Technology and will typically meet or exceed a third order intermodulation level of -150dBc.*

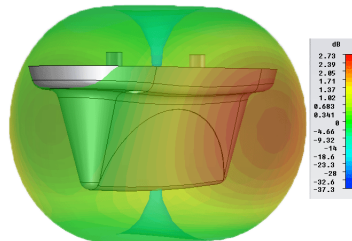
Technical Specification



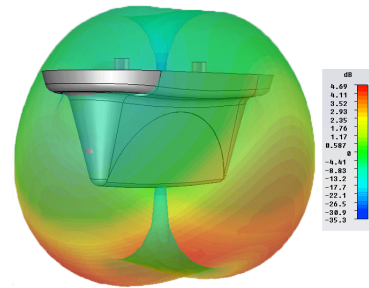
3D Gain Plot (800 MHz)



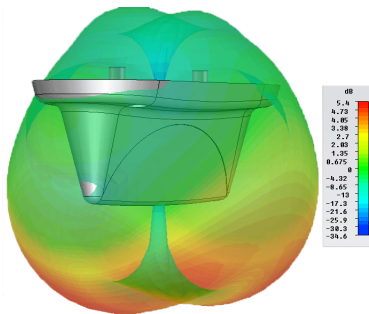
3D Gain Plot (900MHz)



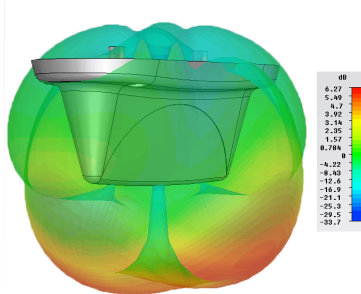
3D Gain Plot (18/1900MHz)



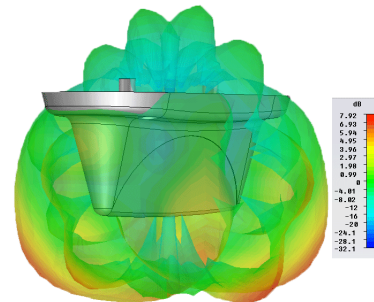
3D Gain Plot (2100MHz)



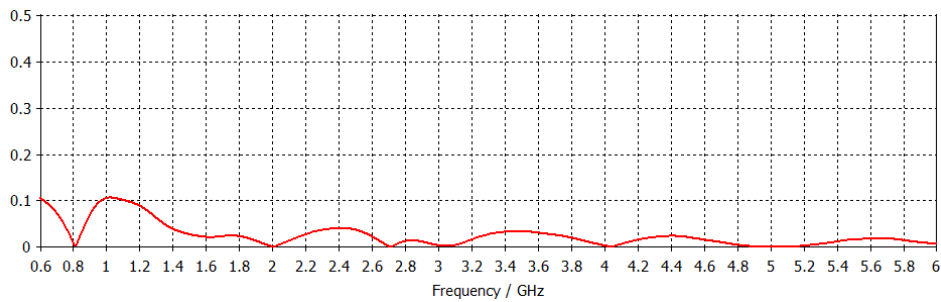
3D Gain Plot (2600MHz)



3D Gain Plot (5800MHz)

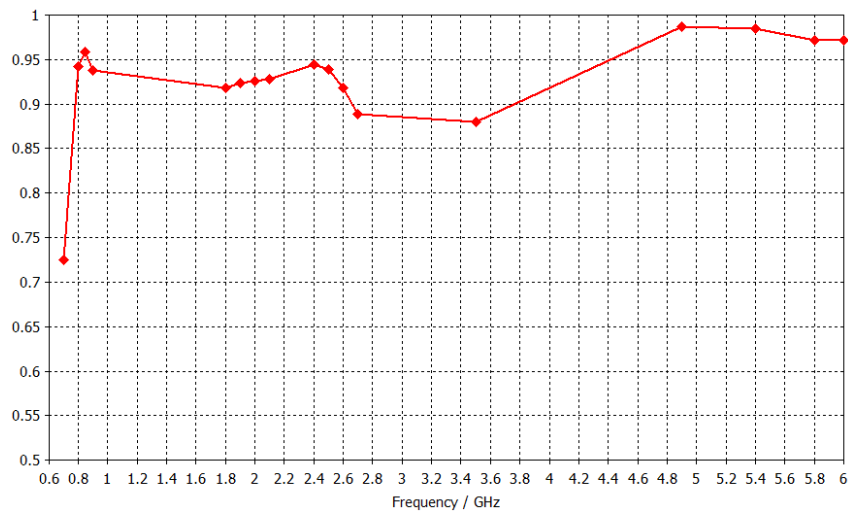


Correlation Co-efficient



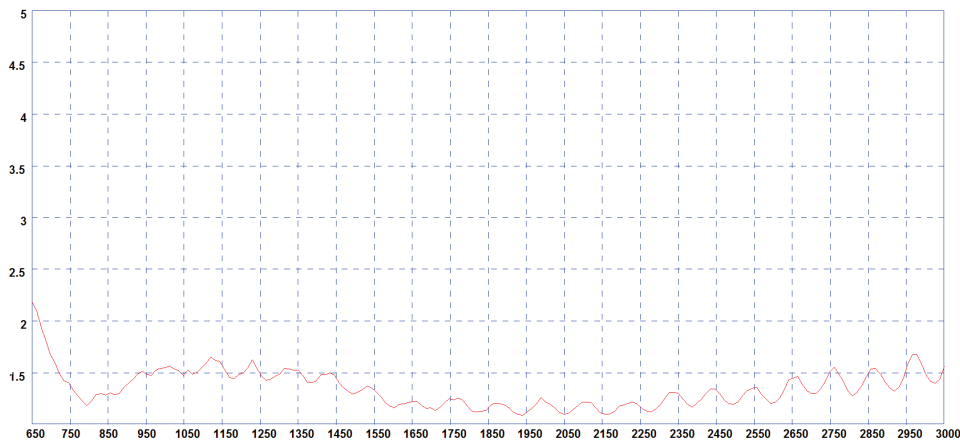
* Measured across connectors without cable.

Total Efficiency



* Measured at connector without cable.

Typical Element VSWR (650MHz to 3GHz)*



*VSWR measured with 1m of CS29 (double shielded RG58) coaxial cable

| | | |
|---|--|--------------|
| Part No. | | CMMG-7-60-NJ |
| Electrical Data (both elements) | | |
| Frequency Range (MHz) | 698-960 / 1500-6000 | |
| Operational bands | 2G/3G/4G/WLAN/WIMAX | |
| Radiation pattern | Omni-directional | |
| VSWR | < 2.5:1 | |
| Correlation Co-efficient | <0.1 | |
| Isolation (across connectors) | >15dB | |
| Peak Gain (both elements fed) | 698-960MHz | 2dBi |
| | 1710-2170MHz | 5dBi |
| | 2200-6000MHz | 7dBi |
| Typical Passive intermod. (2x20W, 3rd ord.) dBc * | <-150 | |
| SAR and 'Touch Safe' Test Data | According to 50385:2002 (Bands: 850, 900, 1800, 2100, 2600MHz) | |
| Max input power (W) | 50 Watts | |
| Impedance | 50Ω | |
| Mechanical Data | | |
| Dimensions (mm) | Height | 90 (3.5") |
| | Length | 220 (8.66") |
| | Width | 106 (4.17") |
| Operating temp (°C) | -30° / +70°C (-22° /158°F) | |
| Material | U.V. Stabilised flame retardant ABS, aluminium base plate | |
| Colour | White | |
| Mounting Data | | |
| Fixing | 4 x 6mm screw fixing holes and/or 2x N socket lock wheel | |
| Diameter (mm) | 6 (0.24") / 15.9 (5/8") | |
| Depth (mm) | 41 (1.6") | |
| Termination | 2x N Socket | |

*Typical Range PIM performance verified @ 1900MHz under controlled conditions by Anritsu PIM Master test equipment.



Panorama Antennas Ltd
Frogmore, London, SW18 1HF, United Kingdom

T: +44 (0)20 8877 4444
F: +44 (0)20 8877 4477
E: sales@panorama-antennas.com
www.panorama-antennas.com

Waiver: The data given above is indicative of the performance of the product/s under particular conditions and does not imply a guarantee of performance or a warranty of fitness for any particular purpose. These specifications are subject to change without notice.
Copyright © Panorama Antennas Ltd. All rights reserved.