

BMP1-7-27-5F

2G/3G/4G Bumper Mount Antenna

01/04/2016 V2

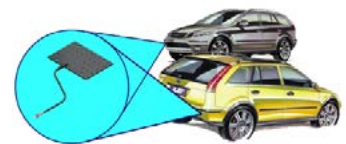


BMP1-7-27-5F

- Covert application
- Robust over moulded construction
- Designed to mount in vehicle bumper / fender

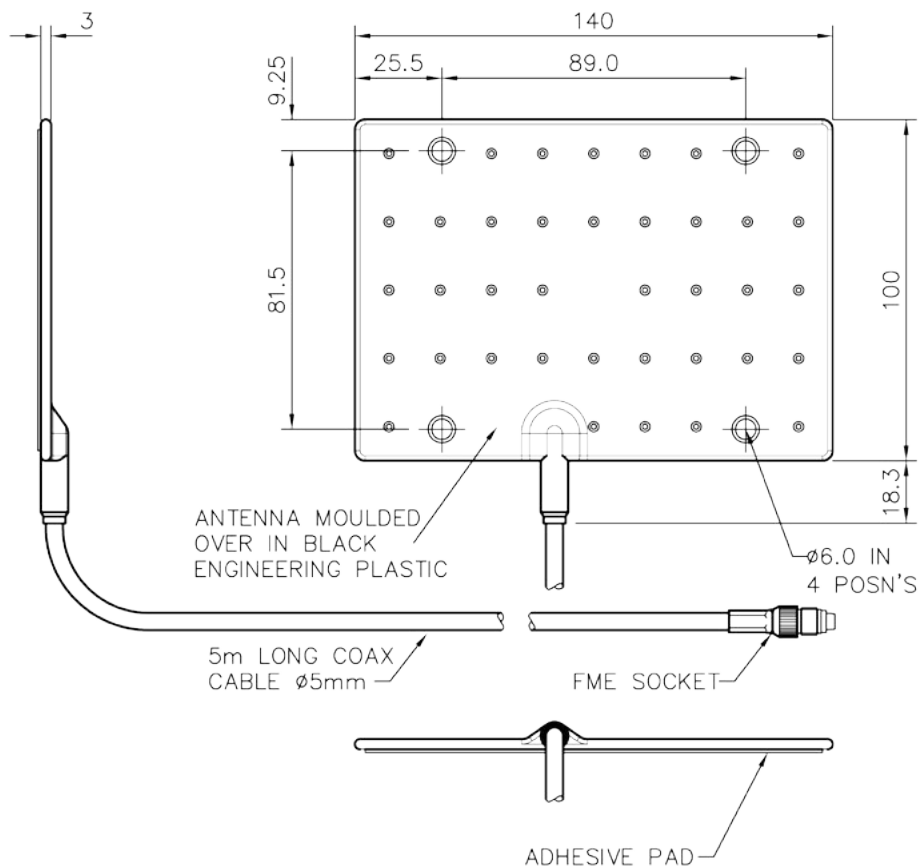
The Panorama Bumper Mount Antenna is designed for covert operations and other applications which require a vehicle antenna that is effectively invisible.

Mounted in the vehicle's bumper, installation requires no drilling and is invisible from the outside of the car.

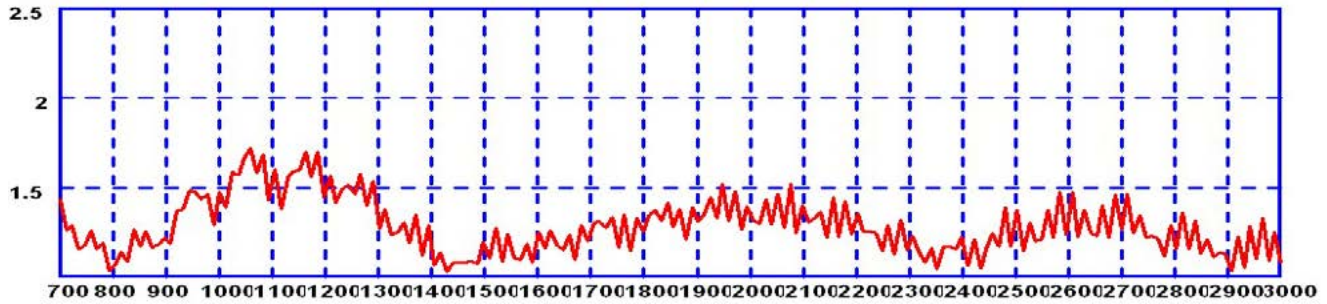


Antenna positioning

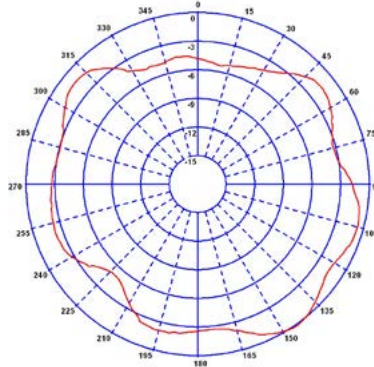
Technical Drawing



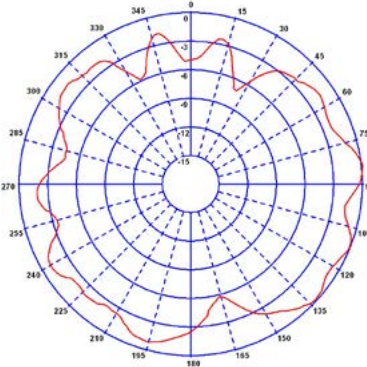
Typical VSWR



Typical H-Plane* (900MHz)



Typical H-Plane* (1800MHz)



* All electrical measurements taken in free space with 5m (17') of cable. Exact installed position in bumper will affect patterns and VSWR response.

Part No.		BMP1-7-27-5F
Electrical Data		
Frequency Range (MHz)	698-960 / 1300-2700	
Peak Gain: Isotropic	2dBi (in free space)	
Compared to ¼ wave	0dB (in free space)	
Typical VSWR	≤2.5:1	
Polarisation	Vertical	
Pattern	Omni-directional (in free space)	
Impedance	50Ω	
Max Input Power (W)	25	
Mechanical Data		
Dimensions (mm)	Length	140 (5.51")
	Width	100 (3.94")
	Thickness	4 (0.16") (including adhesive pad)
Operating Temp (°C)	-40° / +80°C (-40° / 176°F)	
Material	TPE	
Colour	Black	
Mounting Data		
Fixing	Adhesive pad & 4 × fixing holes	
Cable Data		
Type	CS29	
Diameter (mm)	5 (0.2")	
Length (m)	5 (16')	
Termination	FME Socket	



Panorama Antennas Ltd
Frogmore, London, SW18 1HF, United Kingdom

T: +44 (0)20 8877 4444
F: +44 (0)20 8877 4477

E: sales@panorama-antennas.com
www.panorama-antennas.com

Waiver: The data given above is indicative of the performance of the product/s under particular conditions and does not imply a guarantee of performance. These specifications are subject to change without notice.

Copyright © Panorama Antennas Ltd. All rights reserved.