

ELT Series

LoRaWAN® indoor wireless sensors

LoRa
Alliance
Member

ELT-2 & ELT Lite

ELT sensors are general LoRaWAN® devices for measuring analog or digital signals. They are enclosed in an IP67 box and are designed to be outside. The ELT is powered by an AA 3.6V battery, and its lifetime is estimated to be up to 10 years.

up to
10
years
battery life time

Choose
between
internal or
external
antenna

Use together with

- Temperature sensors
- Moisture sensors
- Water leak cable
- Flow meters
- Electricity meters
- Analog sensors

... or any other sensor for your application.

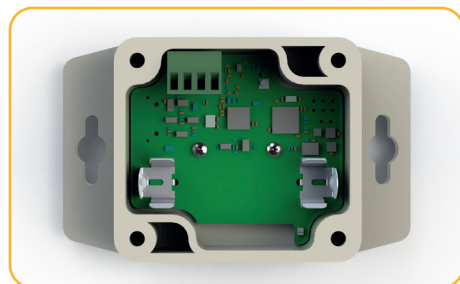
Long range sensor

ELT is the ideal sensor for measuring in advanced places or extreme weather conditions. Use together with a suitable antenna to form your solution.

Depending on the environment and choice of antenna, you will discover that ELT has the capacity of measuring with a remarkably long range.

Easy to configure

All ELSYS sensors are equipped with NFC (Near Field Communication) for easy configuration with a smart phone. You can change the sample rate, data rate, encryption keys, triggers, activation, and much more with our application Sensor Settings.



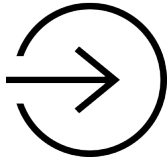
Internal sensors

Inside the ELT-2, you will find four internal sensors: a temperature sensor, a humidity sensor, an accelerometer for orientation measurements, and an atmospheric pressure sensor.



ELT Series

Add on to create a unique solution.



ADC Module/ External Module

Modules that fits inside the ELT-2 and are intended for connecting external professional equipment. Connect platinum sensors, load cells, or control equipment of your choice.



Half wave 915Mhz/868 Mhz antenna

A flexible hinged whip antenna with +3dBi gain.



ELT breatheable weatherproof membrane

Makes measuring of humidity possible. Increases response time.



Distance sensor

Ultrasonic distance sensor for measuring distances up to 5m.



Meter ECH20 EC-5/10-HS

Determines volumetric water content (VWC) by measuring the dielectric constant of the media using capacitance/frequency domain technology.



ELT external temperature probe

Temperature probe for ELT sensors, 1m cable with stripped ends for easy mounting.

With ELT accessories, you can easily customize our products, depending on your needs. Visit our webpage to read more.

Supported external sensors

ELT-2

- Analog input (0-10V)
- Pulse input (pullup/pulldown)
- DS18B20, 1-wire temperature sensor
- Switch/Button, normally open
- Digital input
- Meter 10HS, EC-5, water moisture sensor
- Water leak/sensor cable
- Maxbotix, ultrasound distance sensor
- GPS, with serial output

ELT Lite

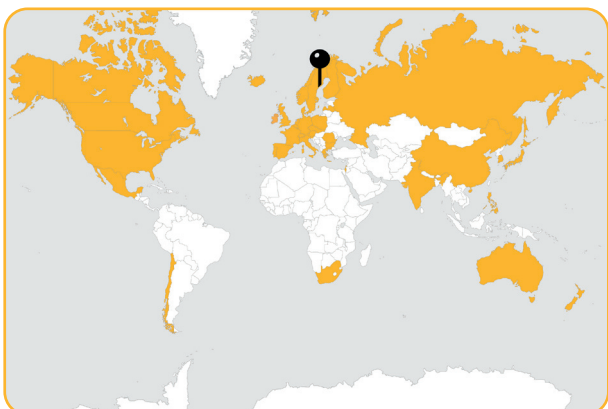
- Analog input (0-10V)
- Pulse input (pullup/pulldown)
- DS18B20, 1-wire temperature sensor
- Switch/Button, normally open
- Digital input
- Meter 10HS, EC-5, water moisture sensor
- Water leak/sensor cable

Contact us for information about other supported external sensors.



ELT-2 and maxbotix mounted

ELSYS LoRaWAN® sensors around the world



ELSYS LoRaWAN® devices can be purchased via a distributor or directly through ELSYS Webshop.

Visit www.elsys.se.

info@elsys.se
support@elsys.se

+46 90 100 500
ELSYS
Industrivägen 12
90130 Umeå
Sweden