

ANALOG & ANALOG PWR

Give IoT connectivity to wired analog sensors.



ALERT

- Provide warnings should thresholds be exceeded



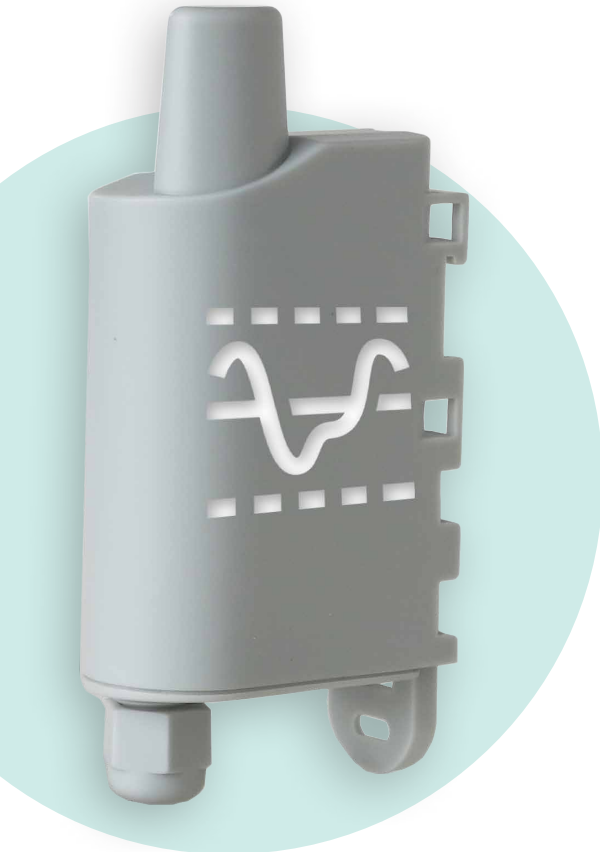
MEASURE

- Monitor the humidity rate, and machine consumption
- Measure a filling level
- Analyse the presence of gas



MONITOR

- Monitor changes in temperatures, the humidity rate, pressure, etc.



FUNCTION

Analog interface

BENEFITS

- 2 inputs: 0-10V or 4-20mA
- Possibility of triggering measurement via 2 dedicated inputs
- Locally and remotely configurable
- Low power consumption for optimal autonomy
- Develop new preventive maintenance services, alerts services, or analysis services.



PRODUCT USES



Measure the continuous filling level of a tank.



Giving IoT connectivity to industrial sensors already installed on a production site.

TECHNICAL SPECIFICATIONS

- Periodic modes or event-based modes
- Replaceable battery/external power supply (PWR version)
 - Dimensions: 105 x 50 x 27 mm
 - Box: IP67 (IP68 on request)
- Integrated fastening system: DIN rail, tube, wall, flange
 - Configurable Life Screen
- Zone: Sigfox: RC1 / LoRaWAN: EU863-870 / WM-Bus: 868
- Operating temperature range: -25°C / +70°C
 - Weight: 70 g
 - Standards: Directive 2014/53/EU (RED)
- Alert concerning product error, configuration error, low battery