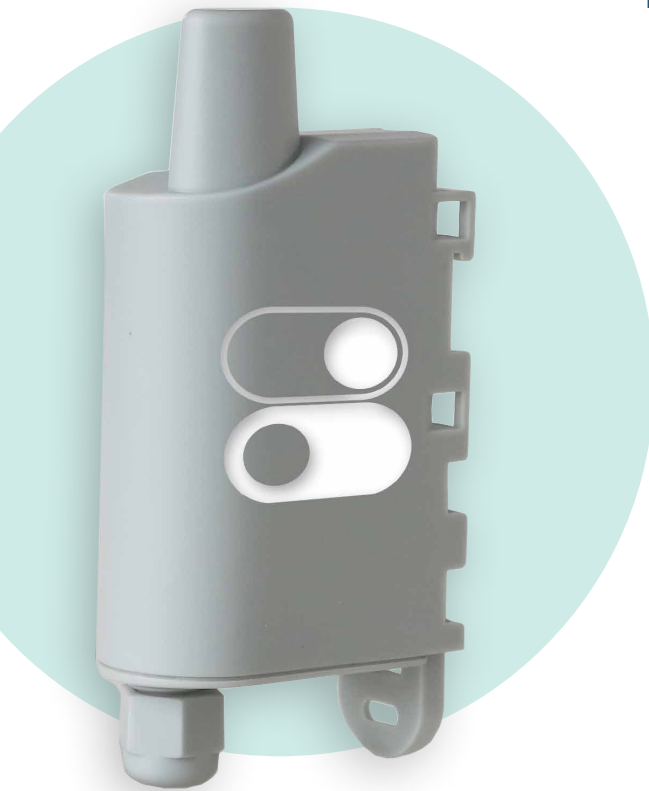


DRY CONTACTS

Report 0-1 states, control relays or equipment, measure machine operating time.

Functions: **4 configurable inputs/outputs**



ACT

Activate or restart machines or equipment items remotely



ALERT

Alert on events:

- Fault feedback,
- Alert on detected event,
- Access control,
- Detection of water presence.



MONITOR

Count the time spent in a given state



Additional features:

- Periodic and/or event mode
- Error or Default management: hardware error, configuration inconsistency and low battery alert
- Timestamp of the frame (LoRaWAN)
- Network Quality Test at start-up (LoRaWAN)



Detect the opening of a door in a restricted area.



Count the time a fridge has been left open.



Broadcast information instantly on a malfunction of an escalator, an elevator...

TECHNICAL SPECIFICATIONS



LoRaWAN ARF8170BA | Sigfox ARF8171BA

Mechanical specifications

Weight	90 g (battery included)
Dimensions	105 x 50 x 27 mm
Enclosure	IP67, EMERGE™ PC 8731HH grey resin (casing), EMERGE™ PC 8430-15 transparent resin (sole)
Mounting	DIN Rail, Tube, Wall, Collar
Cable length	70 cm + 10 cm of stripped wire

Operating conditions

Temperature	-25°C / +70°C
Humidity	0 to 85% RH (non-condensing)

Device Power Supply

Battery Type	1 replaceable battery
Expected Battery Life	For 1 frame every 4 hours (6 frames/day), default open state entry: - Sigfox: 4.2 years - LoRaWAN SF12 or SF7: > 10 years

Device configuration

Local device configuration	IoT Configurator
Remote device configuration	Downlink via the network or via the KARE platform
Security	PIN/PUK Code protection

Radio/Wireless

Supported regions	LoRaWAN EU863-870 / Sigfox RC1
Wireless Security	AES-128 data encryption (LoRaWAN only)
Class	LoRaWAN: Class A Sigfox: Class 0
Supported LoRaWAN features	OTAA, ABP, ADR, adaptive channel setup
RF transmit power	14 dBm
Sensitivity	-136 dBm LoRaWAN @SF12 / -122 dBm Sigfox

Regulations and certifications

Standard	Directive 2014/53/UE (RED)
----------	----------------------------

INPUTS

Number	up to 4 by configuration
Voltage	0 - 24 V
Equivalent input resistance	500 kΩ
Input frequency	10 Hz

OUTPUTS

Number	up to 4 by configuration
Charging voltage	0 - 24 V
Recommended dissipation current	100 mA
Output frequency	10 Hz

BUNDLE	LoRaWAN	Sigfox
Double level sensor	ARF8170BA-B02	ARF8171BA-B02
Contact sensor	ARF8170BA-B01	ARF8171BA-B01
Water leak cable	ARF8170BA-B03	ARF8171BA-B03
Water leak spot	ARF8170BA-B04	ARF8171BA-B04

