



# Nimbus

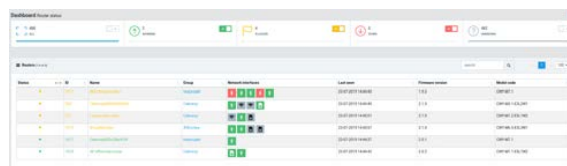
The Celerway router administration system

Celerway routers are managed through the cloud-based **Nimbus administration system**. Nimbus receives and analyses the constant stream of information about the health and status of the networks available to each router. The information is made available to users in concise dashboards.

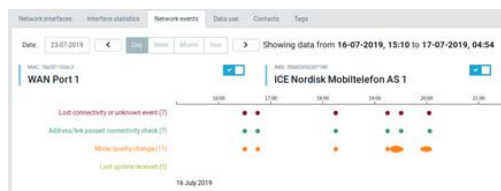
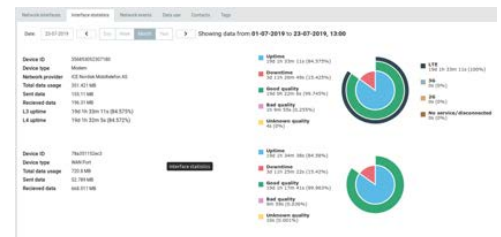
## Highlights

- Live data
- Status dashboards
- Remote access to routers
- Uptime and statistics
- Configuration management
- Remote firmware upgrade
- Data usage reports
- GPS tracking
- License administration
- SIM-card management
- User administration
- Access control
- Control distribution of alarms and reports

See live status information on all routers and network interfaces.

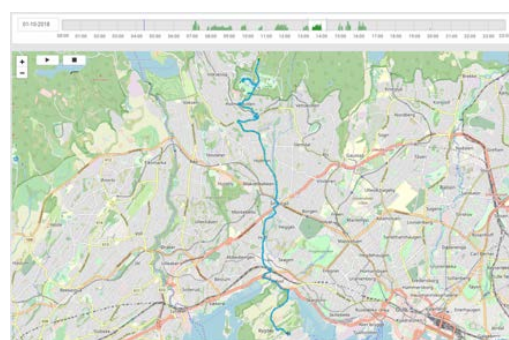


Explore historical information about up-time and mobile network connectivity.



Review a detailed timeline of what happens to each network interface. See when it went down, when it came up again, and when the quality changed for better or worse.

Optimize mobile subscriptions by reviewing detailed information about data-use for each individual network interface/modem. Per hour, per day, per month or per year.



View live and historical position information for routers equipped with GPS and GPS antenna.

