

# Low Profile Multifunction Puck Antenna

L[G]P-7-38[-24-58]

## Low Profile Multifunction Puck Antenna



- Low Profile 'Hockey Puck' Design
- 3G/4G+ Optional WiFi & GPS/GNSS Functionality
- Suitable for M2M and IOT Installations

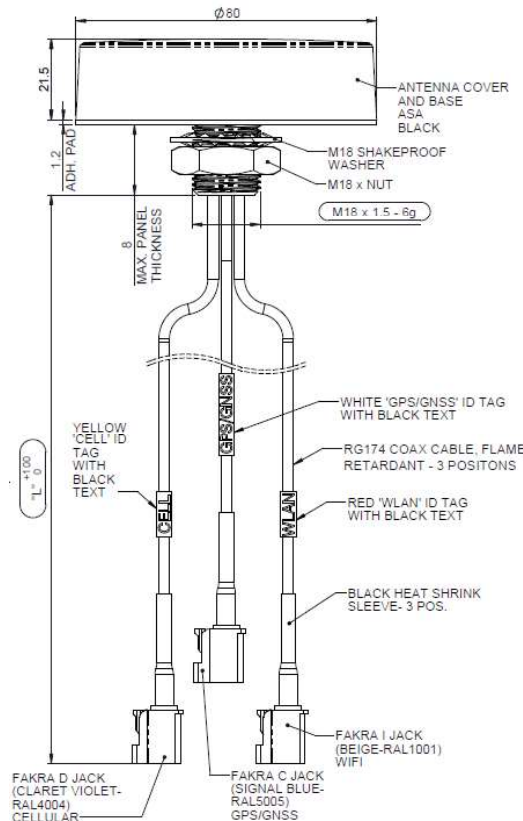
The Panorama L[G]P-7-38[-24-58] range is designed to decrease the lifetime cost of M2M and IOT applications by offering a robust low profile antenna with an extremely compact envelope.

Ideal for situations where a robust but discreet solution is required the antenna covers 698-960/1710-3800MHz + optional 2.4/5.0GHz WiFi and optional GPS/GNSS with a 26dB LNA.

The antenna is suitable for non-conductive panels and can be mounted via the 19mm (3/4") mounting bush and is fitted with 3 RG174 cables and either FAKRA or SMA connectors.

### Technical Drawing

LGP-7-38-24-58-3FK Shown



# Low Profile Multifunction Puck Antenna

PANORAMA ANTENNAS

L[G]P-7-38[-24-58]

## Product Data

### Part No.

LGP-7-38-24-58-3SP

LGP-7-38-24-58-3FK

LGP-7-38-24-58-1FK

LGP-7-38-24-58-1SP

### Electrical Data

Frequency Range (MHz)	Element 1	698-960/1710-3800
	Element 2	2400-2485/4900-6000
	Element 3	1562-1612
Peak Gain†	Element 1: 698-960MHz	0dBi
	Element 1: 1710-3800MHz	2dBi
	Element 2: 2.4GHz	2dBi
	Element 2: 5.0GHz	4dBi
Typical VSWR		<2.5:1
Polarisation		Vertical
Pattern		Omni-directional
Impedance		50Ω
Max input power (W)		20

### GPS/GNSS Data

Frequency Range (MHz)	1562-1612MHz
LNA Gain (dB)	26dB
Typical Current (mA)	15
Typical Voltage	3-5 VDC

### Mechanical Data

Dimensions (mm)	Height	22.5 (0.88")
	Diameter	80 (3.14")
Operating Temp (°C)		-40° / +85°C (-40° / 185°F)
Material		ASA
Colour		Black

### Mounting Data

Fixing	Panel mount 19mm (3/4")
--------	-------------------------

### Cable Data

Cable 1: Cellular	Cable Type	RG174 (meets UN ECE 118)			
	Diameter (mm)	2.8 (0.11")			
	Length (m)	3 (10')			1 (3' 3")
	Termination	SMA(m)	FAKRA D (Burgundy) Jack	FAKRA D (Burgundy) Jack	SMA(m)
Cable 2: WiFi	Cable Type	RG174 (meets UN ECE 118)			
	Diameter (mm)	2.8 (0.11")			
	Length (m)	3 (10')			1 (3' 3")
	Termination	SMA Rev Pol	FAKRA I (Beige) Jack	FAKRA I (Beige) Jack	SMA Rev Pol
Cable 3: GPS/GNSS	Cable Type	RG174 (meets UN ECE 118)			
	Diameter (mm)	2.8 (0.11")			
	Length (m)	3 (10')			1 (3' 3")
	Termination	SMA(m)	FAKRA C (Blue) Jack	FAKRA C (Blue) Jack	SMA(m)

† Peak gain modelled in CST Microwave Studio and does not include cable attenuation

### Panorama Antennas Ltd

Frogmore, London, SW18 1HF, United Kingdom  
 T: +44 (0)20 8877 4444 | F: +44 (0)20 8877 4477  
 E: sales@panorama-antennas.com  
 W: www.panorama-antennas.com



07/08/2020 V3

Page 2

Waiver: The data given above is indicative of the performance of the product/s under particular conditions and does not imply a guarantee of performance. These specifications are subject to change without notice. Copyright © Panorama Antennas Ltd. All rights reserved.

# Low Profile Multifunction Puck Antenna

L[G]P-7-38[-24-58]

Part No.		LGP-7-38-3SP	LGP-7-38-3FK	LGP-7-38-1FK	LGP-7-38-1SP
<b>Electrical Data</b>					
Frequency Range (MHz)	Element 1	698-960/1710-3800			
	Element 2	1562-1612			
Peak Gain†	Element 1: 698-960MHz	0dBi			
	Element 1: 1710-3800MHz	2dBi			
Typical VSWR	<2.5:1				
Polarisation	Vertical				
Pattern	Omni-directional				
Impedance	50Ω				
Max input power (W)	20				
<b>GPS/GNSS Data</b>					
Frequency Range (MHz)	1562-1612Mhz				
LNA Gain (dB)	26dB				
Typical Current (mA)	15				
Typical Voltage	3-5 VDC				
<b>Mechanical Data</b>					
Dimensions (mm)	Height	22.5 (0.88")			
	Diameter	80 (3.14")			
Operating Temp (°C)	-40° / +85°C (-40° / 185°F)				
Material	ASA				
Colour	Black				
<b>Mounting Data</b>					
Fixing	Panel mount 19mm (3/4")				
<b>Cable Data</b>					
Cable 1: Cellular	Cable Type	RG174 (meets UN ECE 118)			
	Diameter (mm)	2.8 (0.11")			
	Length (m)	3 (10')		1 (3' 3")	
	Termination	SMA(m)	FAKRA D (Burgundy) Jack	FAKRA D (Burgundy) Jack	SMA(m)
Cable 2: GPS/GNSS	Cable Type	RG174 (meets UN ECE 118)			
	Diameter (mm)	2.8 (0.11")			
	Length (m)	3 (10')		1 (3' 3")	
	Termination	SMA(m)	FAKRA C (Blue) Jack	FAKRA C (Blue) Jack	SMA(m)

# Low Profile Multifunction Puck Antenna

L[G]P-7-38[-24-58]

Part No.		LPP-7-38-24-58-3SP	LPP-7-38-24-58-3FK	LPP-7-38-24-58-1FK	LPP-7-38-24-58-1SP
<b>Electrical Data</b>					
Frequency Range (MHz)	Element 1	698-960/1710-3800			
	Element 2	2400-2485/4900-6000			
Peak Gain†	Element 1: 698-960MHz	0dBi			
	Element 1: 1710-3800MHz	2dBi			
	Element 2: 2.4GHz	2dBi			
	Element 2: 5.0GHz	4dBi			
Typical VSWR	<2.5:1				
Polarisation	Vertical				
Pattern	Omni-directional				
Impedance	50Ω				
Max input power (W)	20				
<b>Mechanical Data</b>					
Dimensions (mm)	Height	22.5 (0.88")			
	Diameter	80 (3.14")			
Operating Temp (°C)	-40° / +85°C (-40° / 185°F)				
Material	ASA				
Colour	Black				
<b>Mounting Data</b>					
Fixing	Panel mount 19mm (3/4")				
<b>Cable Data</b>					
Cable 1: Cellular	Cable Type	RG174 (meets UN ECE 118)			
	Diameter (mm)	2.8 (0.11")			
	Length (m)	3 (10')		1 (3' 3")	
	Termination	SMA(m)	FAKRA D (Burgundy) Jack	FAKRA D (Burgundy) Jack	SMA(m)
Cable 2: WiFi	Cable Type	RG174 (meets UN ECE 118)			
	Diameter (mm)	2.8 (0.11")			
	Length (m)	3 (10')		1 (3' 3")	
	Termination	SMA Rev Pol	FAKRA I (Beige) Jack	FAKRA I (Beige) Jack	SMA Rev Pol

# Low Profile Multifunction Puck Antenna

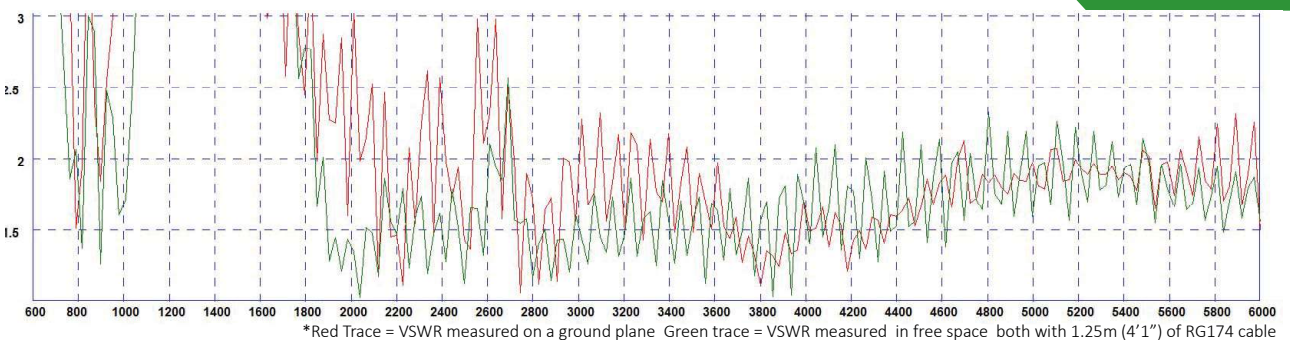
PANORAMA ANTENNAS

L[G]P-7-38[24-58]

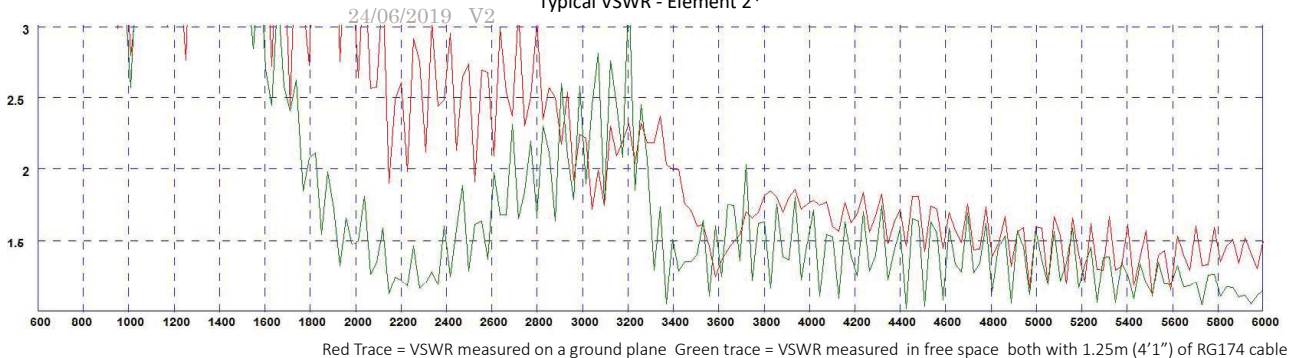
Part No.	LPP-7-38-3SP	LPP-7-38-3FK	LPP-7-38-1FK	LPP-7-38-1SP	
<b>Electrical Data</b>					
Frequency Range (MHz)	Element 1		698-960/1710-3800		
Peak Gain†	Element 1: 698-960MHz		0dBi		
	Element 1: 1710-3800MHz		2dBi		
Typical VSWR	<2.5:1				
Polarisation	Vertical				
Pattern	Omni-directional				
Impedance	50Ω				
Max input power (W)	20				
<b>Mechanical Data</b>					
Dimensions (mm)	Height		22.5 (0.88")		
	Diameter		80 (3.14")		
Operating Temp (°C)	-40° / +85°C (-40° / 185°F)				
Material	ASA				
Colour	Black				
<b>Mounting Data</b>					
Fixing	Panel mount 19mm (3/4")				
<b>Cable Data</b>					
Cable 1: Cellular	Cable Type		RG174 (meets UN ECE 118)		
	Diameter (mm)		2.8 (0.11")		
	Length (m)		3 (10')	1 (3' 3")	
	Termination		SMA(m)	FAKRA D (Burgundy) Jack	FAKRA D (Burgundy) Jack SMA(m)

Typical VSWR - Element 1\*

Product Data



Typical VSWR - Element 2\*

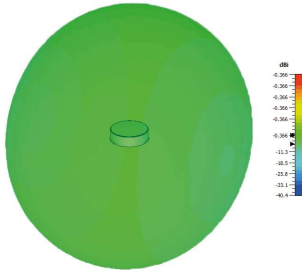


# Low Profile Multifunction Puck Antenna

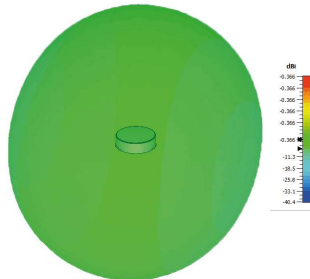
L[G]P-7-38[-24-58]

## 3D Patterns Cell

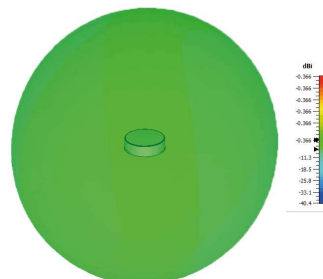
Typical 3D Pattern 700MHz



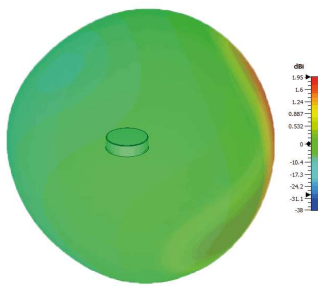
Typical 3D Pattern 800MHz



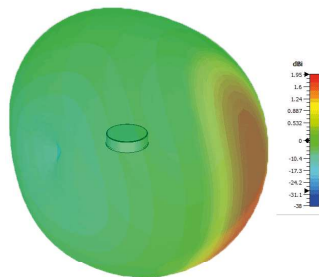
Typical 3D Pattern 900MHz



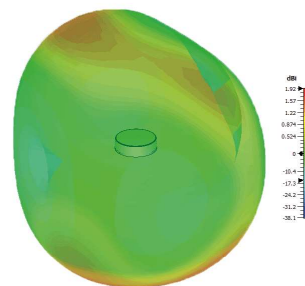
Typical 3D Pattern 1800MHz



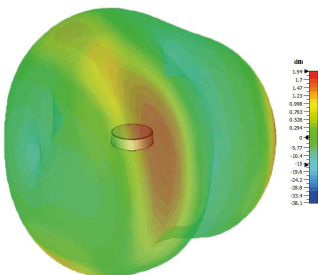
Typical 3D Pattern 2000MHz



Typical 3D Pattern 2600MHz

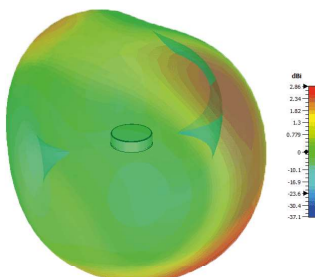


Typical 3D Pattern 3600MHz



## 3D Patterns WiFi

Typical 3D Pattern 2450MHz



Typical 3D Pattern 5400MHz

