

# **Indoor Ambiance Monitoring Sensor**

## **Featuring LoRaWAN®**

### **AM103 & AM103L**

User Guide



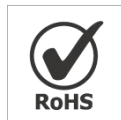
## Safety Precautions

Milesight will not shoulder responsibility for any loss or damage resulting from not following the instructions of this operating guide.

- ❖ The device must not be disassembled or remodeled in any way.
- ❖ In order to protect the security of the device, please change device password when first configuration. The default password is 123456.
- ❖ Do not place the device outdoors where the temperature is below/above operating range. Do not place the device close to objects with naked flames, heat source (oven or sunlight), cold source, liquid and extreme temperature changes.
- ❖ The device is not intended to be used as a reference sensor, and Milesight will not should responsibility for any damage which may result from inaccurate readings.
- ❖ The battery should be removed from the device if it is not to be used for an extended period. Otherwise, the battery might leak and damage the device. Never leave a discharged battery in the battery compartment.
- ❖ The device must never be subjected to shocks or impacts.
- ❖ Do not clean the device with detergents or solvents such as benzene or alcohol. To clean the device, wipe with a soft moistened cloth. Use another soft, dry cloth to wipe dry.

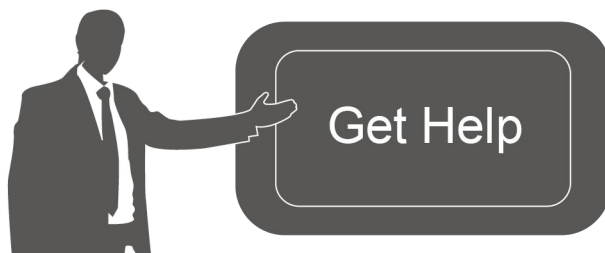
## Declaration of Conformity

AM103/AM103L is in conformity with the essential requirements and other relevant provisions of the CE, FCC, and RoHS.



**Copyright © 2011-2023 Milesight. All rights reserved.**

All information in this guide is protected by copyright law. Whereby, no organization or individual shall copy or reproduce the whole or part of this user guide by any means without written authorization from Xiamen Milesight IoT Co., Ltd.



For assistance, please contact

Milesight technical support:

Email: [iot.support@milesight.com](mailto:iot.support@milesight.com)

Support Portal: [support.milesight-iot.com](http://support.milesight-iot.com)

Tel: 86-592-5085280

Fax: 86-592-5023065

Address: Building C09, Software Park III,  
Xiamen 361024, China

## Revision History

Date	Doc Version	Description
Jan. 20, 2022	V 1.0	Initial version
Feb. 15, 2023	V1.1	<ol style="list-style-type: none"> <li>1. Add single channel mode</li> <li>2. Add data storage and retransmission feature</li> <li>3. Add hibernate feature and support to disable/enable last update time</li> </ol>

# Contents

- 1. Product Introduction ..... 5
  - 1.1 Overview ..... 5
  - 1.2 Features ..... 5
- 2. Hardware Introduction ..... 5
  - 2.1 Packing List ..... 5
  - 2.2 Hardware Overview ..... 6
  - 2.3 E-ink Screen (AM103 Only) ..... 6
  - 2.4 Button and Traffic Light ..... 7
  - 2.5 Dimensions ..... 7
- 3. Power Supply ..... 8
- 4. Operation Guide ..... 8
  - 4.1 Log in the ToolBox ..... 8
  - 4.2 LoRaWAN Settings ..... 9
  - 4.3 Time Synchronization ..... 11
  - 4.4 Basic Settings ..... 11
  - 4.5 Advanced Settings ..... 13
    - 4.5.1 Calibration Settings ..... 13
    - 4.5.2 Threshold Settings ..... 14
    - 4.5.3 Data Storage ..... 15
    - 4.5.4 Data Retransmission ..... 16
  - 4.6 Maintenance ..... 17
    - 4.6.1 Upgrade ..... 17
    - 4.6.2 Backup ..... 18
    - 4.6.3 Reset to Factory Default ..... 19
- 5. Installation ..... 19
- 6. Device Payload ..... 21
  - 6.1 Basic Information ..... 21
  - 6.2 Sensor Data ..... 21
  - 6.3 Downlink Commands ..... 22
  - 6.4 Historical Data Enquiry ..... 24
- Appendix ..... 26
  - Carbon Dioxide Levels and Guidelines ..... 26

# 1. Product Introduction

## 1.1 Overview

AM103/AM103L is a compact indoor ambience monitoring device including humidity, temperature, and CO<sub>2</sub> sensor for wireless LoRaWAN<sup>®</sup> network. It is equipped with NFC (Near Field Communication) and can easily be configured via a smartphone or a PC software.

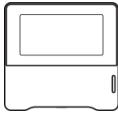
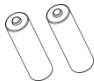

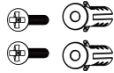



Sensor data are transmitted in real-time using standard LoRaWAN<sup>®</sup> protocol which enables encrypted radio transmissions over long distance while consuming very little power. The user can obtain sensor data and view the trend of data change through Milesight IoT Cloud or through the user's own Network Server.

## 1.2 Features

- Robust LoRa connectivity for secure long range transmission
- Integrated temperature, humidity and CO<sub>2</sub> sensor
- Easy configuration via NFC
- Vivid emoticon & traffic light indicator to understand the comfort level
- Standard LoRaWAN<sup>®</sup> supported
- Milesight IoT Cloud compliant

# 2. Hardware Introduction

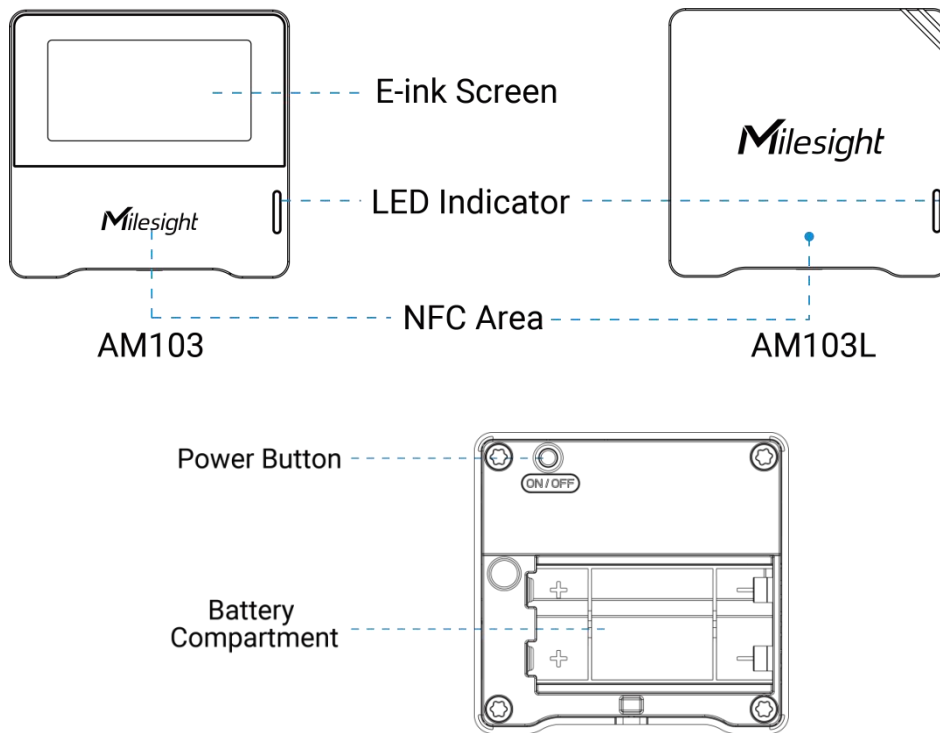
## 2.1 Packing List

			
1 x	2 x	1 x 3M	2 x Wall
AM103/AM103L Device	ER14505 Li-SOCl <sub>2</sub> Batteries	Double-Sided Tape	Mounting Kits
			
1 x	1 x	1 x	
Theft-Deterring Screw	Quick Guide	Warranty Card	



**If any of the above items is missing or damaged, please contact your sales Representative.**

## 2.2 Hardware Overview



## 2.3 E-ink Screen (AM103 Only)

Icon	Description
	Battery level
Last Update 22:22	The time of the last collected sensor data
	The device has joined the network
	The device has not joined the network
20.3°C	Temperature
58.3% RH	Humidity
560 CO <sub>2</sub> PPm 	Show the CO <sub>2</sub> concentration and history trends
	When the CO <sub>2</sub> concentration exceeds the Polluted threshold
	When the CO <sub>2</sub> concentration exceeds the Bad threshold
	Excellent Environment

	When the CO <sub>2</sub> concentration exceeds the Polluted threshold
	When the CO <sub>2</sub> concentration exceeds the Bad threshold

**Note:**

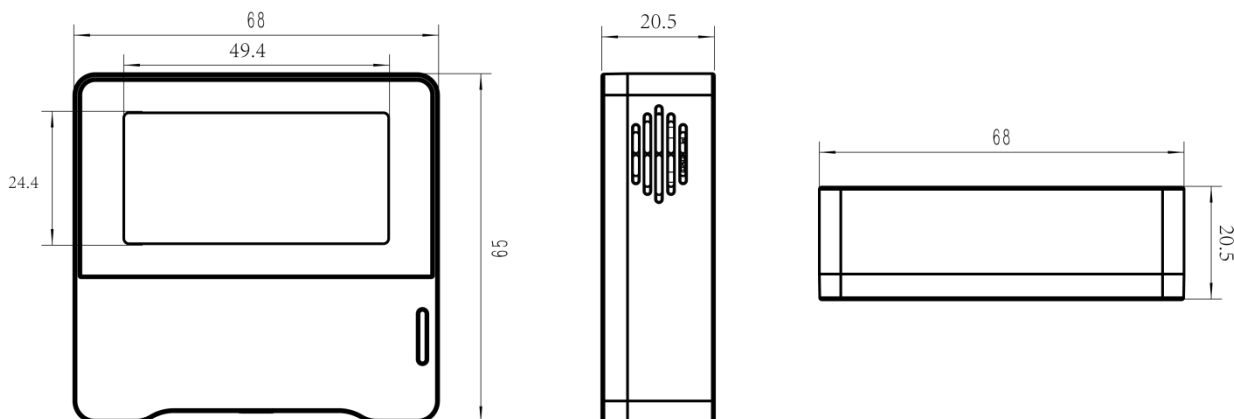
- AM103 will update data on the screen every 2 minutes if [Screen Smart Mode](#) is disabled;
- AM103 will do a full-screen refresh after 30 times update in order to remove ghosting.
- When AM103 detects the temperature beyond the range from 0°C to 40°C, the screen will close automatically.
- Please refer [section 4.5.2](#) for Excellent/Polluted/Bad threshold settings.

## 2.4 Button and Traffic Light

Function	Action	Light Status
Power ON/OFF	Press and hold the power button for more than 3 seconds	Power On: Off → On Power Off: On → Off
Reset to Factory Default	Press and hold the power button for more than 10 seconds	Quickly Blinks
Check On/Off Status	Quickly press the power button	Light On: Device is on. Light Off: Device is off.
CO <sub>2</sub> Level Indication	When the CO <sub>2</sub> concentration exceeds the threshold	Excellent: Blinks Polluted: Blinks Bad: Blinks

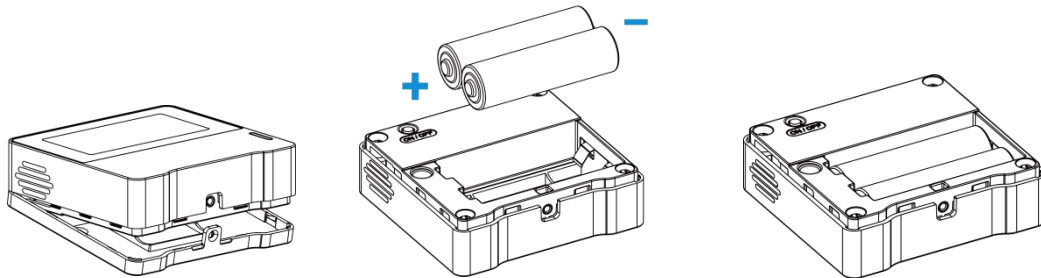
**Note:** If the traffic light is disabled, it will not show air quality level indication.

## 2.5 Dimensions (mm)



### 3. Power Supply

Remove the rear cover of device to install the batteries, do not reverse the direction of batteries when installing.



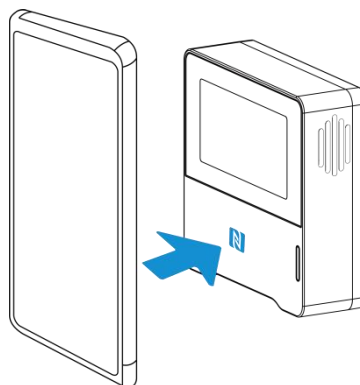
**Note:** The device can only be powered by ER14505 Li-SOCl<sub>2</sub> batteries not alkaline batteries.

### 4. Operation Guide

#### 4.1 Log in the ToolBox

The AM103/AM103L can be configured via a NFC supported mobile phone.

1. Download and install “Milesight ToolBox” App from Google Play or Apple App Store.
2. Enable NFC on the smartphone and launch Milesight ToolBox.
3. Attach the smartphone with NFC area to the device to read device information. Basic information and settings of the device will be shown on ToolBox App if it’s recognized successfully. You can read and configure the device by tapping the Read/Write device on the App. In order to protect the security of the device, please change password when first configuration. The default password is **123456**.



**Note:**

- 1) Ensure the location of smartphone NFC area and it’s recommended to take off phone case.
- 2) If the smartphone fails to read/write configurations via NFC, keep the phone away and back to try again.



3) AM103/AM103L can also be configured by ToolBox software via a dedicated NFC reader provided by Milesight IoT, you can also configure it via TTL interface inside the device.

## 4.2 LoRaWAN Settings

Go to **Device > Settings > LoRaWAN Settings** of ToolBox App to configure join type, App EUI, App Key and other information. You can also keep all settings by default.

Device EUI

24E124785C382260

\* APP EUI

24e124c0002a0001

\* Application Port    -    85    +

Join Type

OTAA

\* Application Key

\*\*\*\*\*

Parameters	Description
Device EUI	Unique ID of the device which can also be found on the label.
App EUI	Default App EUI is 24E124C0002A0001.
Application Port	The port is used for sending and receiving data, the default port is 85.
Join Type	OTAA and ABP modes are available.
Application Key	Appkey for OTAA mode, default is 5572404C696E6B4C6F52613230313823.
Device Address	DevAddr for ABP mode, default is the 5 <sup>th</sup> to 12 <sup>th</sup> digits of SN.
Network Session Key	Nwkskey for ABP mode, default is 5572404C696E6B4C6F52613230313823.
Application Session Key	Appskey for ABP mode, default is 5572404C696E6B4C6F52613230313823.
LoRaWAN Version	V1.0.2 and V1.0.3 are available.
Work Mode	It's fixed as Class A.
RX2 Data Rate	RX2 data rate to receive downlinks.
RX2 Frequency	RX2 frequency to receive downlinks. Unit: Hz
Channel Mode	Select Standard-Channel mode or Single-Channel mode. When Single-Channel

	<p>mode is enabled, only one channel can be selected to send uplinks. Please enable Single-Channel mode if you connect device to DS7610.</p>												
Channel	<p>Enable or disable the frequency to send uplinks.</p> <p>* Support Frequency</p> <p>EU868</p> <p><input type="checkbox"/> <input type="button" value="-"/> 868.1 <input type="button" value="+"/></p> <p><input type="checkbox"/> <input type="button" value="-"/> 868.3 <input type="button" value="+"/></p> <p><input type="checkbox"/> <input type="button" value="-"/> 868.5 <input type="button" value="+"/></p> <p><input type="checkbox"/> <input type="button" value="-"/> 863 <input type="button" value="+"/></p> <p>If frequency is one of CN470/AU915/US915, enter the index of the channel that you want to enable and make them separated by commas.</p> <p><b>Examples:</b>          1, 40: Enabling Channel 1 and Channel 40          1-40: Enabling Channel 1 to Channel 40          1-40, 60: Enabling Channel 1 to Channel 40 and Channel 60          All: Enabling all channels          Null: Indicates that all channels are disabled</p> <p>* Support Frequency</p> <p>AU915</p> <p>Enable Channel Index ⓘ</p> <p>8-15</p> <table border="1"> <thead> <tr> <th>Index</th> <th>Frequency/MHz ⓘ</th> </tr> </thead> <tbody> <tr> <td>0 - 15</td> <td>915.2 - 918.2</td> </tr> <tr> <td>16 - 31</td> <td>918.4 - 921.4</td> </tr> <tr> <td>32 - 47</td> <td>921.6 - 924.6</td> </tr> <tr> <td>48 - 63</td> <td>924.8 - 927.8</td> </tr> <tr> <td>64 - 71</td> <td>915.9 - 927.1</td> </tr> </tbody> </table>	Index	Frequency/MHz ⓘ	0 - 15	915.2 - 918.2	16 - 31	918.4 - 921.4	32 - 47	921.6 - 924.6	48 - 63	924.8 - 927.8	64 - 71	915.9 - 927.1
Index	Frequency/MHz ⓘ												
0 - 15	915.2 - 918.2												
16 - 31	918.4 - 921.4												
32 - 47	921.6 - 924.6												
48 - 63	924.8 - 927.8												
64 - 71	915.9 - 927.1												
Spread Factor	If ADR is disabled, the device will send data via this spread factor.												
Confirmed Mode	If the device does not receive ACK packet from network server, it will resend data once.												
Rejoin Mode	Reporting interval ≤ 30 mins: the device will send a specific number of LinkCheckReq MAC packets to the network server every 30 mins to validate												

	connectivity; If there is no response, the device will re-join the network. Reporting interval > 30 mins: the device will send a specific number of LinkCheckReq MAC packets to the network server every reporting interval to validate connectivity; If there is no response, the device will re-join the network.
Set the number of packets sent	When rejoin mode is enabled, set the number of LinkCheckReq packets sent.
ADR Mode	Allow network server to adjust datarate of the device.
Tx Power	Transmit power of the device.

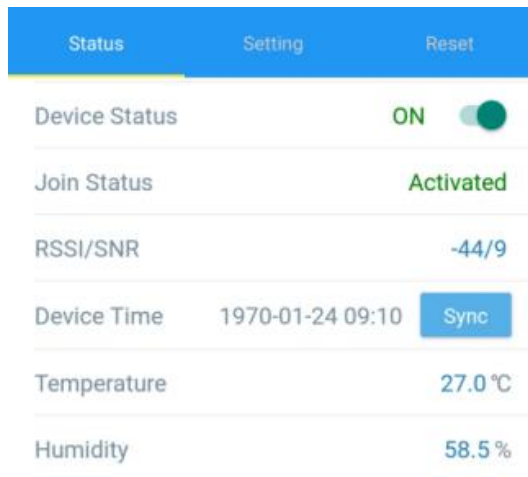
**Note:**

- 1) Please contact sales for device EUI list if there are many units.
- 2) Please contact sales if you need random App keys before purchase.
- 3) Select OTAA mode if you use Milesight IoT cloud to manage devices.
- 4) Only OTAA mode supports rejoin mode.

### 4.3 Time Synchronization

**ToolBox Sync:**

Go to **Device > Status** of ToolBox App to click **Sync** to sync the time.



**Network Server Sync:**

Go to **Device > Settings > LoRaWAN Settings** to change device LoRaWAN® version as 1.0.3, then the network server will use MAC command to assign the time to device every time it joins the network. This should ensure network server uses LoRaWAN® V1.0.3.

### 4.4 Basic Settings

Go to **Device > Settings > General Settings** to change the reporting interval, screen mode, etc.

Temperature Unit (i)

Reporting Interval  10  min

LED Indicator (i)

Data Storage (i)

Data Retransmission (i)

Screen Display (i)

Color Theme

Last Update

Screen Smart Mode (i)

Least Refresh Time  10  min

Screen Hibernate (i)

Hibernate Period 22:00 - 09:00  
 Everyday >

LoRa Uplink (i)

Change Password

Parameters	Description
Temperature Unit	Change the temperature unit displayed on the ToolBox and screen. <b>Note:</b> 1) The temperature unit in the reporting package is fixed as °C. 2) Please modify the threshold settings if the unit is changed.
Reporting Interval	Reporting interval of transmitting current sensor values to network server. Default: 10 mins, Range: 1-1080 mins
LED Indicator	Enable or disable the traffic light indicator to indicate CO <sub>2</sub> threshold.
Data Storage	Disable or enable data storage locally. (see section <a href="#">4.5.3</a> to export data )
Data Retransmission	Disable or enable data retransmission. (see section <a href="#">4.5.4</a> )
Change Password	Change the password for ToolBox App or software to read/write this device.

AM103 Screen Settings	
Screen Display	Enable or disable screen display.
Color Theme	Select screen display background color as Light or Dark.
Last Update	Enable or disable the Last Update time displayed on the screen.
Screen Smart Mode	When the current collected value is close to the last value ( $tem \leq \pm 0.5^{\circ}C$ and $hum \leq \pm 3\%$ and $CO_2 \leq \pm 50$ ppm), the screen will stop updating to save power.
Least Refresh Time	When screen smart mode is enabled, set the least time to fresh the screen. Range: 2-1080 mins
Hibernate Mode	The screen will hibernate during a time period.
Hibernate Period	<p>Set the period of screen hibernate.</p>
LoRa Uplink	Enable or disable to send LoRaWAN uplinks during hibernate. It's disabled by default.

## 4.5 Advanced Settings

### 4.5.1 Calibration Settings

ToolBox supports numerical calibration for all items. Go to **Device > Settings > Calibration Settings** to type the calibration value and save, the device will add the calibration value to raw value.

**Temperature**

**Numerical Calibration**  
 Current Value: 24.4 °C  
 Calibration Value  
 °C  
 Final Value: 24.3 °C

**Humidity**

Besides numerical calibration, ToolBox provides more calibration methods for CO<sub>2</sub>:

**Manual Calibration:** Put the device in an open outdoor environment for more than 10 minutes and click this button to calibrate the CO<sub>2</sub> value.

**Restore Factory Calibration:** Clean the manual calibration and turn back to factory calibration.

**Auto Background Calibration:** When enabled, keep the device work in a well-ventilated environment for 7 days, then disable the calibration.

**CO2**

ⓘ

ⓘ

Auto Background Calibration ⓘ

**Numerical Calibration**  
 Current Value: 643 ppm  
 Calibration Value  
 ppm  
 Final Value: 643 ppm

### 4.5.2 Threshold Settings

Go to **Device > Settings > Threshold Settings** to enable the threshold settings and input the threshold.

For temperature, it will upload the current data once instantly when temperature is over or below the threshold. Note that when you change the temperature unit, please re-configure the threshold.

**Temperature**

Over / °C

Below / °C

For CO<sub>2</sub> threshold, it supports defining Excellent, Polluted and Bad threshold for traffic light and screen alarms. Besides, when it exceeds the Bad threshold, AM103/AM103L will upload the current data once instantly.

**CO<sub>2</sub> / ppm**

Excellent
  Polluted
  Bad

### 4.5.3 Data Storage

AM103/AM103L supports storing 560 data records locally and exports data via ToolBox App. The device will record the data according to reporting interval even not joining network.

1. Go to **Device > Settings > General Settings** to enable data storage feature.
2. Go to **Device > Maintenance** to click **Export**, then select the data time range and click **Confirm** to export data. ToolBox App can export last 14 days' data at most.

Cancel	Export Data Period				Confirm
	2022-10-06 10:15	To	2022-10-13 10:15		
					🔄
					⏪ ⏩ ⏴ ⏵
	9	5	9	14	
	2022	10	6	10	15
			7	11	16

3. Click **Data Cleaning** to clear all stored data inside the device.

Export Historical Data



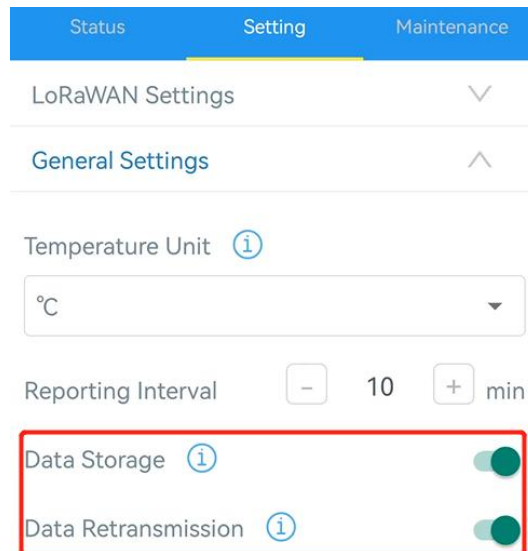
### 4.5.4 Data Retransmission

AM103/AM103L supports data retransmission to ensure network server can get all data even if network is down for some times. There are two ways to get the lost data:

- Network server sends downlink commands to enquire the historical data for specifying time range, see section 6.4;
- When network is down if no response from LinkCheckReq MAC packets for a period of time, the device will record the network disconnected time and re-transmit the lost data after device re-connects the network.

Here are the steps for data retransmission:

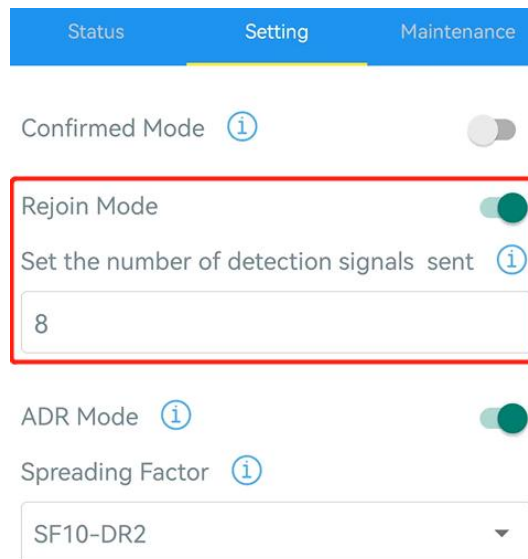
1. Ensure the device time is correct (see section 4.3);
2. Enable data storage feature and data retransmission feature;



3. Go to **Device > Settings > LoRaWAN Settings** to enable rejoin mode feature and set the number of packets sent. Take below as example, the device will send LinkCheckReq MAC packets to the network server at least every 30 mins to check if the network is disconnected; if there is no response for 8 times (8 \* 30 mins = 240 mins =4 hours), the device will record a data



lost time point( disconnection time minus 4 hours).



4. After the network connected back, the device will send the lost data from the point in time when the data was lost according to the reporting interval.

**Note:**

- 1) If the device is rebooted or re-powered when data retransmission is not completed, the device will re-send all retransmission data again after device is reconnected to the network;
- 2) If the network is disconnected again during data retransmission, it will only send the latest disconnection data;
- 3) The retransmission data format is started with “20ce”, please refer to see section [6.4](#).
- 4) Data retransmission will increase the uplinks and shorten the battery life.

## 4.6 Maintenance

### 4.6.1 Upgrade

- 1. Download firmware from [www.milesight-iot.com](http://www.milesight-iot.com) to your smartphone.
- 2. Open ToolBox App and click “Browse” to import firmware and upgrade the device.

**Note:**

- 1) Operation on ToolBox is not supported during the upgrade.
- 2) Only Android version ToolBox supports the upgrade feature.

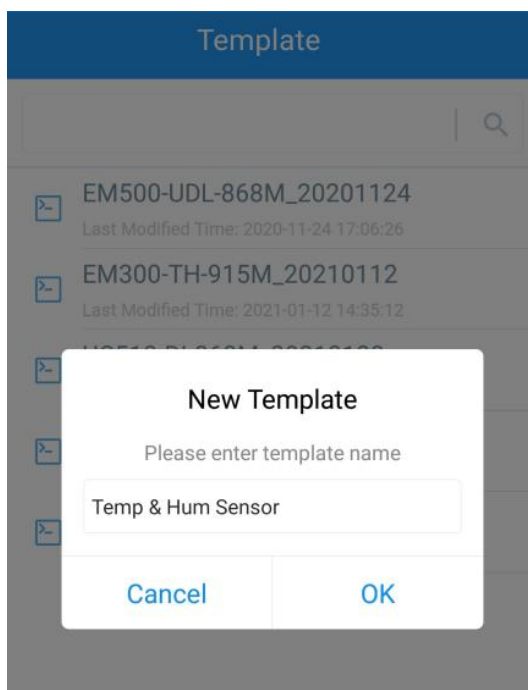
Status	Setting	Maintenance
SN	6725B48528280013	
Model	AM103-868M	
Firmware Version	V1.1-a2	
Hardware Version	V1.0	
Manual Upgrade		

Browse

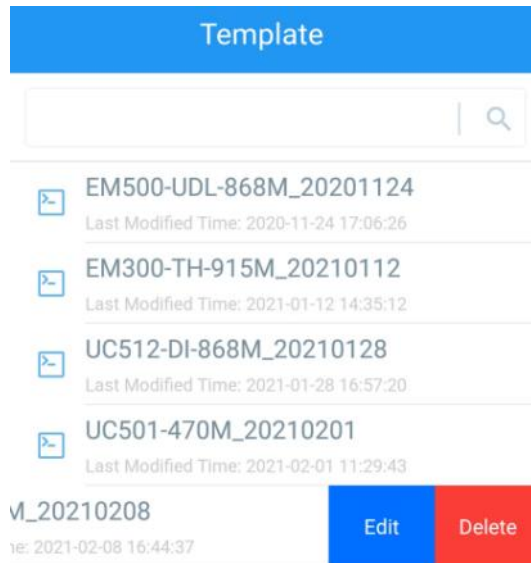
### 4.6.2 Backup

AM103/AM103L supports configuration backup for easy and quick device configuration in bulk. Backup is allowed only for devices with the same model and LoRaWAN® frequency band.

1. Go to “Template” page on the App and save current settings as a template. You can also edit the template file.
2. Select one template file that saved in the smartphone and click “Write”, then attach it to another device to write configuration.



**Note:** Slide the template item to the left to edit or delete it. Click the template to edit the configurations.



### 4.6.3 Reset to Factory Default

Please select one of following methods to reset device:

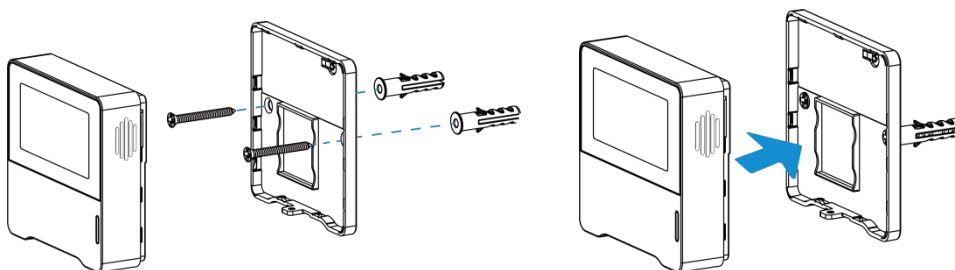
**Via Hardware:** Hold on power button for more than 10s.

**Via ToolBox App:** Go to **Device > Maintenance** to click **Reset**, then attach smart phone with NFC area to device to complete reset.

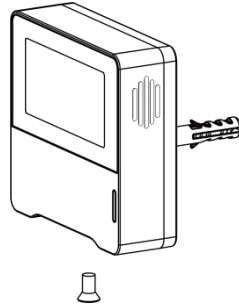
## 5. Installation

### Fixed by Screws:

1. Remove the rear cover of the device, screw the wall plugs into the wall and fix the rear cover with screws on it, then install back the device.

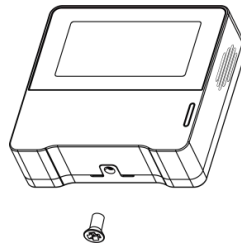


2. Fix the bottom of the device to the rear cover with the theft-detering screw.

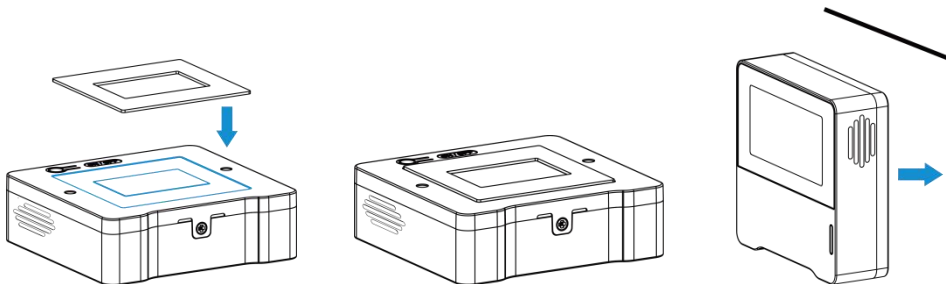


### Fixed by 3M Tape:

1. Fix the bottom of the device to the rear cover with the theft-detering screw.



2. Paste 3M double-sided tape to the back of the device, then tear the other side and place it on a flat surface.



### Note:

In order to ensure the best detection and LoRaWAN<sup>®</sup> communication work, it is recommended to install AM103/AM103L as follows:

- Do not mount the device where the temperature is below/above operating range and temperature varies greatly.
- Stay far away from any heat source or cold source like oven, refrigerator.
- Do not mount the device close to where airflow varies greatly like windows, vent, fan and air conditioner.
- Do not mount the device upside down.
- Do not place the device right to the window or door. If you have to, you'd better pull the curtain.
- It is recommended to install at least 1.5 m high from floor.

## 6. Device Payload

All data are based on following format (HEX), the Data field should follow little-endian:

Channel1	Type1	Data1	Channel2	Type2	Data2	Channel 3	...
1 Byte	1 Byte	N Bytes	1 Byte	1 Byte	M Bytes	1 Byte	...

For decoder examples please find files on <https://github.com/Milesight-IoT/SensorDecoders>.

### 6.1 Basic Information

AM103/AM103L report basic information of sensor whenever joining the network.

Channel	Type	Description
ff	01 (Protocol Version)	01 => V1
	09 (Hardware Version)	01 40 => V1.4
	0a (Software Version)	01 14 => V1.14
	0b (Power On)	Device is on
	0f (Device Type)	00: Class A, 01: Class B, 02: Class C
	16 (Device SN)	16 digits
	18 (Sensor Status)	<b>Byte 0:</b> 00 means all sensors <b>Byte 1:</b> 0=disabled, 1=enabled and every bit means every kind of sensor Bit 0: temp, Bit 1: hum, Bit 4: CO <sub>2</sub>

**Example:**

ff0bff ff166710b32620711912 ff090100 ff0a0101 ff0f00 ff180013					
Channel	Type	Value	Channel	Type	Value
ff	0b (Power On)	ff (Reversed)	ff	16 (Device SN)	6710b32620711912
Channel	Type	Value	Channel	Type	Value
ff	09 (Hardware version)	0100 (V1.0)	ff	0a (Software version)	0101 (V1.1)
Channel	Type	Value	Channel	Type	Value
ff	0f (Device Type)	00 (Class A)	ff	18 (Sensor Status)	00 => All Sensors 13 = 0001 0011 => All sensors are enabled

### 6.2 Sensor Data

AM103/AM103L report sensor data according to reporting interval (10 mins by default).

Item	Channel	Type	Description
Battery Level	01	75	UINT8, Unit: %
Temperature	03	67	INT16, Unit: °C, Resolution: 0.1 °C
Humidity	04	68	UINT8, Unit: %, Resolution: 0.5 %
CO <sub>2</sub>	07	7d	UINT16, Unit: ppm

**Example:**

1. Periodic Package

0367ff00 04684f 077d1303					
Channel	Type	Value	Channel	Type	Value
01	75 (Battery Level)	64 => 100%	03	67 (Temperature)	ff00 => 00ff = 255 Temp = 255*0.1 = 25.5°C
Channel	Type	Value	Channel	Type	Value
04	68 (Humidity)	4f => 79 Hum = 79*0.5 = 39.5%	07	7d (CO <sub>2</sub> )	13 03 => 03 13 = 787 ppm

2. CO<sub>2</sub> value exceeds the Bad threshold.

Channel	Type	Value
07	7d	0a 06 => 06 0a = 1546 ppm

### 6.3 Downlink Commands

AM103/AM103L support downlink commands to configure the device. The application port is 85 by default.

Channel	Type	Description
ff	03 (Set Reporting Interval)	2 Bytes, unit: s
	10 (Reboot)	ff
	1a (CO <sub>2</sub> Calibration)	00: Factory Calibration Restored 03: Manual Calibration
	39 (CO <sub>2</sub> Auto Background Calibration)	5 Bytes, <b>Byte 1:</b> 00-disable, 01-enable <b>Bytes 2-5:</b> b4009001
	2d (Screen Display)	00: disable, 01: enable
	2f (LED Indicator)	00: disable, 01: enable

54 (Set CO <sub>2</sub> Threshold)	<p><b>Byte 1:</b> 00: disable, 01: enable</p> <p><b>Byte 2-3:</b> Bad threshold value</p> <p><b>Byte 4-5:</b> Polluted threshold value</p> <p><b>Note:</b> Polluted threshold value must be lower than bad threshold value.</p>
56 (Screen Smart Mode)	00: disable, 01: enable
68 (Data Storage)	00: disable, 01: enable
69 (Data Retransmission)	00: Disable, 01: Enable
6a (Data Retransmission Interval)	<p>3 Bytes</p> <p>Byte 1: 00</p> <p>Byte 2-3: interval time, unit:s range: 30~1200s (600s by default)</p>
75 (Hibernate Mode)	<p>7 Bytes,</p> <p><b>Byte 1-hibernate mode:</b> 00-disable, 01-enable</p> <p><b>Byte 2-LoRa uplink:</b> 00-disable, 01-enable</p> <p><b>Byte 3-4:</b> start time, unit: min</p> <p><b>Byte 5-6:</b> end time, unit: min</p> <p><b>Byte 7:</b> bit0=0, bit 1-7: Monday to Sunday, 0=disable, 1=enable</p> <p><b>Note:</b> if start time equals end time, it means all day.</p>
85 (Last Update)	00: disable, 01: enable
86 (Least Refresh Time)	2 Bytes, unit: min, range: 2~1800 mins

**Example:**

1. Set reporting interval as 20 minutes.

ff03b004		
Channel	Type	Value
ff	03 (Set Reporting Interval)	b0 04 => 04 b0 = 1200s = 20 minutes

2. Reboot the device.

ff10ff		
Channel	Type	Value
ff	10 (Reboot)	ff (Reserved)

3. Disable the e-ink screen display.

ff2d00		
Channel	Type	Value
ff	2d (Screen Display)	00: Disable the display

4. Set CO<sub>2</sub> bad threshold as 1500ppm and polluted threshold as 1000 ppm.

ff5401dc05e803		
Channel	Type	Value
ff	54 (Set CO <sub>2</sub> Threshold)	Byte 1: 01 = enable Byte 2-3: dc 05 => 05 dc = 1500 ppm (Bad threshold) Byte 4-5: e8 03 => 03 e8 = 1000 ppm (Polluted threshold)

5. Enable screen hibernate and LoRa uplink, set the hibernate time between 22:00 to next day 9:00 on week days (Monday to Friday).

ff750101 2805 1c02 3e		
Channel	Type	Value
ff	75 (Screen Hibernate)	Byte 1: 01 = screen hibernate enable Byte 2: 01 =LoRa uplink enable Byte 3-4: 28 05=>05 28=1320 mins =22:00 Byte 5-6: 1c 02 => 02 1c = 540 mins =9:00 Byte 7: 3e=00111110 bit1-5=1 means Monday to Friday enable

### 6.4 Historical Data Enquiry

AM103/AM103L sensors support sending downlink commands to enquire historical data for specified time point or time range. Before that, ensure **the device time is correct and data storage feature was enabled to store the data.**

**Command format:**

Channel	Type	Description
fd	6b (Enquire data in time point)	4 Bytes, unix timestamp
fd	6c (Enquire data in time range)	Start time (4 bytes) + End time (4 bytes), Unix timestamp
fd	6d (Stop query data report)	ff
ff	6a (Report Interval)	3 Bytes Byte 1: 01 Byte 2-3: interval time, unit:s range: 30~1200s (60s by default)



**Reply format:**

Channel	Type	Description
fc	6b/6c	00: data enquiry success 01: time point or time range invalid 02: no data in this time or time range
20	ce (Historical Data)	Data time stamp (4 Bytes) + Temperature(2 Bytes)+Humidity (1 Byte) + CO <sub>2</sub> (2 Bytes)

**Note:**

1. The device only uploads no more than 300 data records per range enquiry.
2. When enquiring the data in time point, it will upload the data which is closest to the search point within the reporting interval range. For example, if the device reporting interval is 10 minutes and users send command to search for 17:00's data, if the device find there is data stored in 17:00, it will upload this data; if not, it will search for data between 16:50 to 17:10 and upload the data which is closest to 17:00.

**Example:**

1. Enquire historical data between 2023/02/15 10:00:54 to 2023/02/15 11:45:40.

fd6c d63cec63 6455ec63		
Channel	Type	Value
fd	6c (Enquire data in time range)	Start time: d63cec63 => 63ec3cd6 = 1676426454 =2023/02/15 10:00:54 End time: 6455ec63 => 63ec5564 = 1676432740 =2023/02/15 11:45:40

Reply:

fc6c00		
Channel	Type	Value
fc	6c (Enquire data in time range)	00: data enquiry success

20ce 5c44ec63 d30059d302			
Channel	Type	Time Stamp	Value
20	ce (Historical Data)	5c44ec63 => 2023/02/15 10:33:00	Temperature: d300=>00d3=21.1°C Humidity: 59=>89=44.5% CO <sub>2</sub> : d302=>02d3=723 ppm

## Appendix

### Carbon Dioxide Levels and Guidelines

CO <sub>2</sub> Level	Description
400 ppm	Normal outdoor air level.
400-1000 ppm	Typical level indoors with good ventilation.
1000-2000 ppm	Poor air quality - requires ventilation.
≥ 2000 ppm	Headaches, sleepiness and stagnant, stale, stuffy air. Poor concentration, loss of attention, increased heart rate and slight nausea may also be present.
5000 ppm	Workplace exposure limit (as 8-hour TWA) in most jurisdictions.
> 40000 ppm	Exposure may lead to serious oxygen deprivation resulting in permanent brain damage, coma, even death.

**-END-**