



# Field Test Device

Qualify and validate your network.



TEST

- Ensure the good positioning of your objects



MEASURE

- Check your network's coverage
- Choose the most appropriate network



## FUNCTION

Network infrastructure

## BENEFITS

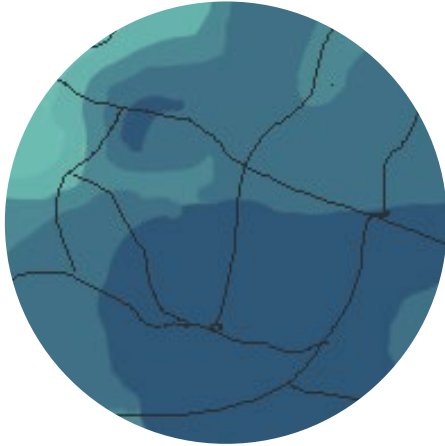
- Immediate viewing of network coverage data
- Geolocation of measuring points
- Dedicated Web application
- A benchmark product widely praised by public network operators

**adeunis**

283 rue Louis Néel - Parc Technologique Pré Roux  
38920 CROLLES - France  
www.adeunis.com



## PRODUCT USES



Check the availability of a network operated for its objects.



Test the feasibility of a tracking project.

## TECHNICAL SPECIFICATIONS

- Viewable data: UL/DL - Channels - RSSI/SNR/PER - GPS - Temperature
- Self-powered and rechargeable
- Dimensions: 180 x 72 x 21 mm
- Zone: Sigfox: RC1 / LoRaWAN: EU863-870
- Operating temperature range: -20° C to +75° C
- Weight: 140g
- Standards: Directive 2014/53/EU (RED)
- Radiated RF power: 14 dBm
- Sensitivity: -126dBm SIGFOX / -140dBm LoRa

### adeunis

283 rue Louis Néel - Parc Technologique Pré Roux  
38920 CROLLES - France  
[www.adeunis.com](http://www.adeunis.com)

